



# **SWSI**

**Southern Welding Systems International LLC**

**Welding | Industrial | Safety**

**International Wholesale Distribution**

**Contact us for Pricing:**

**Phone: 281-485-9772 | Fax: 281-485-4386**

**Email: [Sales@swsintl.com](mailto:Sales@swsintl.com) | Website: [www.swsintl.com](http://www.swsintl.com)**

**Address: 3908 1st Street Pearland, Texas 77581**



# WIRELESS REMOTES

## (FOOT and HAND CONTROLS)



[MillerWelds.com/Wireless](http://MillerWelds.com/Wireless)

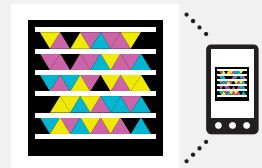
## Complete Control with No Cords Attached

**Increases Productivity · Saves Money · Improves Safety · Easy to Use**

### Experience Freedom and Control

- Repositioning the remote quickly and easily around the weld without having to untangle cords improves productivity. No need for trips back to the power source to change parameters.
- Going wireless eliminates standard remote control cords that are a regular point of wear, failures and the associated downtime.
- Safety is improved by reducing clutter and potential tripping hazards.
- Wireless provides the same performance, responsiveness and effectiveness as the corded remote models.
- Improves weld quality with precise operator control.
- Standard AA batteries have a long battery life and allow for quick and easy replacement.
- Hand Control belt clip keeps the remote secure and accessible.

Check out [MillerWelds.com/wireless](http://MillerWelds.com/wireless) for videos, articles, and an ROI calculator tool!



Scan this tag to see wireless remote videos.

## Suggested Power Sources



Wireless Remotes are recommended for use with the following power sources.

### Wireless Remote Foot Control

Maxstar® 150 STL and STH<sup>1</sup> (pg 35)  
Maxstar® 200<sup>2</sup>, 280, 350 and 700 (pg 36)  
Dynasty® 200, 280, 350 and 700 (pg 38)  
Syncrowave® 250 DX and 350 LX (pg 41)  
PipeWorx™ Welding System (pg 49)

<sup>1</sup>Requires Adapter Cord #300 507.

<sup>2</sup>Excludes Maxstar 200 STR.

### Wireless Remote Hand Control

Gold Star® Series (pg 32)  
CST™ 280 (pg 33)  
Maxstar® 200<sup>1</sup>, 280, 350 and 700 (pg 36)  
Dynasty® 200, 280, 350 and 700 (pg 38)  
Dimension™ Series (pg 45)  
XMT® Series<sup>2</sup> (pg 46 and 47)  
CST™ 280 Rack (pg 50)  
XMT® 304 and 350 Racks<sup>2</sup> (pg 50)  
Trailblazer® (pg 56, 58 and 60)  
Big Blue® 300 Pro<sup>3</sup> (pg 61)  
Big Blue® 350 PipePro<sup>3</sup> (pg 62)  
Big Blue® 400 Eco Pro<sup>3</sup> (pg 63)  
Big Blue® 450 Duo CST™<sup>3</sup> and 700 Duo Pro<sup>3</sup> (pg 64)

<sup>1</sup>Excludes Maxstar 200 STR. <sup>2</sup>Excludes XMT 350 VS.

<sup>3</sup>Requires Wireless Antenna Kit #300 749.





## Wireless Remote Foot Control

See Literature No. AY/6.5

The Wireless Remote Foot Control, designed specifically for TIG welding in manufacturing, fabrication and plant applications, allows the operator to adjust amperage at the point of use without being limited to the range of the remote cord.



\*Some applications are not suitable for wireless communication. Keep in mind that the rated range is subjective, and depends on factors such as obstructions, frequency interference, transmission technology, and weather. The figures listed assume ideal conditions are present.

**Improves productivity and maneuverability** by eliminating cord tangles. Reduces clean up time and work area cord clutter.

**Improves safety** by eliminating control cord and reducing potential trip hazard.

**Improves reliability** by eliminating control cord failure.

**Multiple frequency sharing** allows up to 20 systems to operate in a 90-foot (27.4 m) radius with accuracy and precision—and without delay, system interference, or crosstalk.

**Auto on** feature extends the battery life up to 250 hours of welding without turning the pedal on and off.

**Easy-to-install receiver** plugs directly into the 14-pin receptacle of Miller machines.

**Easily programmable.** Control can be quickly and easily paired with any other Miller 14-pin wireless receiver. (Control is preprogrammed when purchased with the receiver.)

**Easy-Glide Wear Pads™** glide across concrete, making it easy to reposition the pedal for comfort and speed.

### Industrial

#### Processes

- TIG (GTAW) • Pulsed TIG (GTAW-P)

#### Comes Complete With

- Wireless foot control transmitter
- Wireless 14-pin receiver
- Battery box with three AA batteries
- Four Easy-Glide Wear Pads™

#### Suggested Power Sources

- Maxstar® 150 STL/STH<sup>1</sup> (pg 35)
- Maxstar® 200<sup>2</sup>/280/350/700 (pg 36)
- Dynasty® 200/280/350/700 (pg 38)
- Syncrowave® 250 DX/350 LX (pg 41)
- PipeWorx™ Welding System (pg 49)

<sup>1</sup> Requires Adapter Cord #300 507.

<sup>2</sup> Excludes Maxstar 200 STR.

Note: If your power source is not listed, visit [MillerWelds.com/wireless](http://MillerWelds.com/wireless) to check compatibility.

#### Most Popular Accessories

- Replacement Easy-Glide Wear Pad™ #248 274 (sold individually)
- Replacement Battery Box #249 297

Visit [MillerWelds.com](http://MillerWelds.com) or your distributor for other Miller® options and accessories.

Model/Stock Number	Component	Power Supply	Battery Life	Rated Range*	Temperature	Radio Frequency	RF Power	Antenna	Dimensions	Weight
Wireless Foot Control System (#300 429)	Foot Control (Transmitter)	Three AA Batteries	250 hours	90 ft. (27.4 m)	-13° F to +158° F (-25° C to +70° C)	2.4 Ghz (ISM Band)	<3 mW	Internal	H: 6 in. (152 mm)	3 lb. (1.4 kg) w/Batteries
	14-Pin Receiver	10 - 35 V AC or DC	N/A						D: 11.5 in. (292 mm)	
									D: 3.5 in. (89 mm)	0.16 lb. (0.07 kg)
									Dia: 1.5 in. (38 mm)	

## Wireless Remote Hand Control

See Literature No. AY/6.6

The Wireless Remote Hand Control, designed for Stick, TIG, MIG and Flux-Cored welding, allows the operator to adjust parameters for different joint configurations, electrodes and wire types/sizes at the point of use instead of walking back to the machine.



\*Some applications are not suitable for wireless communication. Keep in mind that the rated range is subjective, and depends on factors such as obstructions, frequency interference, transmission technology, and weather. The figures listed assume ideal conditions are present.

**Improves productivity** by allowing parameter adjustments up to 300 feet away from welder without returning to the machine or calling for assistance.

**Improves weld quality.** Operators can easily adjust their machines to optimize the parameters for different joint configurations, electrodes, and wire types and sizes.

**Improves safety** by eliminating control cord and reducing potential trip hazard.

**Reduces maintenance time and cost.** No cord repairs.

**Smart Touch™ buttons** increase or decrease machine parameters in one or five percent increments, for quick and accurate adjustments.

**Multiple frequency sharing** allows up to 20 systems to operate in a 90-foot (27.4 m) radius with accuracy and precision—and without delay, system interference, or crosstalk.

**Easy-to-install receiver** plugs directly into the 14-pin receptacle of Miller machines.

**Easily programmable.** Control can be quickly and easily paired with any other Miller 14-pin wireless receiver.

**Digital meter display** allows presetting percentage of machine output before welding, and viewing amperage and voltage while welding.

**High-visibility color** makes hand control easy to locate on the jobsite.

### Industrial

#### Processes

- TIG (GTAW) • Pulsed TIG (GTAW-P)
- Stick (SMAW) • MIG (GMAW)\*
- Flux-Cored (FCAW)<sup>1</sup>

<sup>1</sup> Only with voltage-sensing feeder.

#### Comes Complete With

- Wireless hand control transmitter
- Wireless 14-pin receiver
- Battery box with three AA batteries
- Belt clip

#### Suggested Power Sources

- Gold Star® Series (pg 32)
- CST™ 280 (pg 33)
- Maxstar® 200<sup>2</sup>/280/350/700 (pg 36)
- Dynasty® 200/280/350/700 (pg 38)
- Dimension™ Series (pg 45)
- XMT® Series (except VS) (pg 46/47)
- Trailblazer® (pg 56/58/60)
- Big Blue® 300 Pro<sup>3</sup>/350 PipePro<sup>3</sup>/400 Eco Pro<sup>3</sup>/450 Duo CST™<sup>3</sup>/700 Duo Pro<sup>3</sup> (pg 61/62/63/64)

<sup>2</sup> Excludes Maxstar 200 STR.

<sup>3</sup> Requires Wireless Antenna Kit #300 749.

Note: If your power source is not listed, visit [MillerWelds.com/wireless](http://MillerWelds.com/wireless) to check compatibility.

#### Most Popular Accessories

- Replacement Belt Clip #249 233
- Replacement Battery Box #249 297

Visit [MillerWelds.com](http://MillerWelds.com) or your distributor for other Miller® options and accessories.

Model/Stock Number	Component	Power Supply	Battery Life	Rated Range*	Temperature	Radio Frequency	RF Power	Antenna	Dimensions	Weight
Wireless Hand Control System (#300 430)	Hand Control (Transmitter)	Three AA Batteries	250 hours	300 ft. (91 m)	-13° F to +158° F (-25° C to +70° C)	2.4 Ghz (ISM Band)	<3 mW	Internal	H: 5 in. (127 mm)	0.6 lb. (0.27 kg) w/Batteries
	14-Pin Receiver	10 - 35 V AC or DC	N/A						D: 1.375 in. (35 mm)	
									D: 3.5 in. (89 mm)	0.16 lb. (0.07 kg)
									Dia: 1.5 in. (38 mm)	